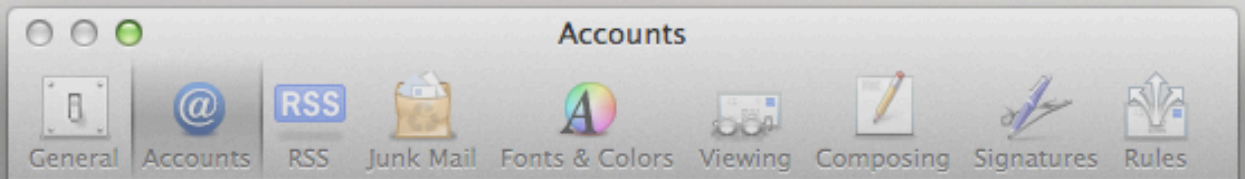




Email Setup Instructions for OS X

OS X Mail

- 1) In the dock, open the Mail application. It is a postage stamp with a bird on it.
- 2) In the upper left hand side menu, click **Mail** and go down to **Preferences**.
- 3) In the preferences windows, click **Accounts**. At the bottom left hand side of that window you will see a plus and minus sign. Click the plus to add a new account.
- 4) Follow the screen shots below. Replacing the email address and password with the ones supplied to you by Gosfield North.



Add Account

You'll be guided through the steps to set up an additional account.

To get started, provide the following information:

Full Name:

Email Address:

Password:

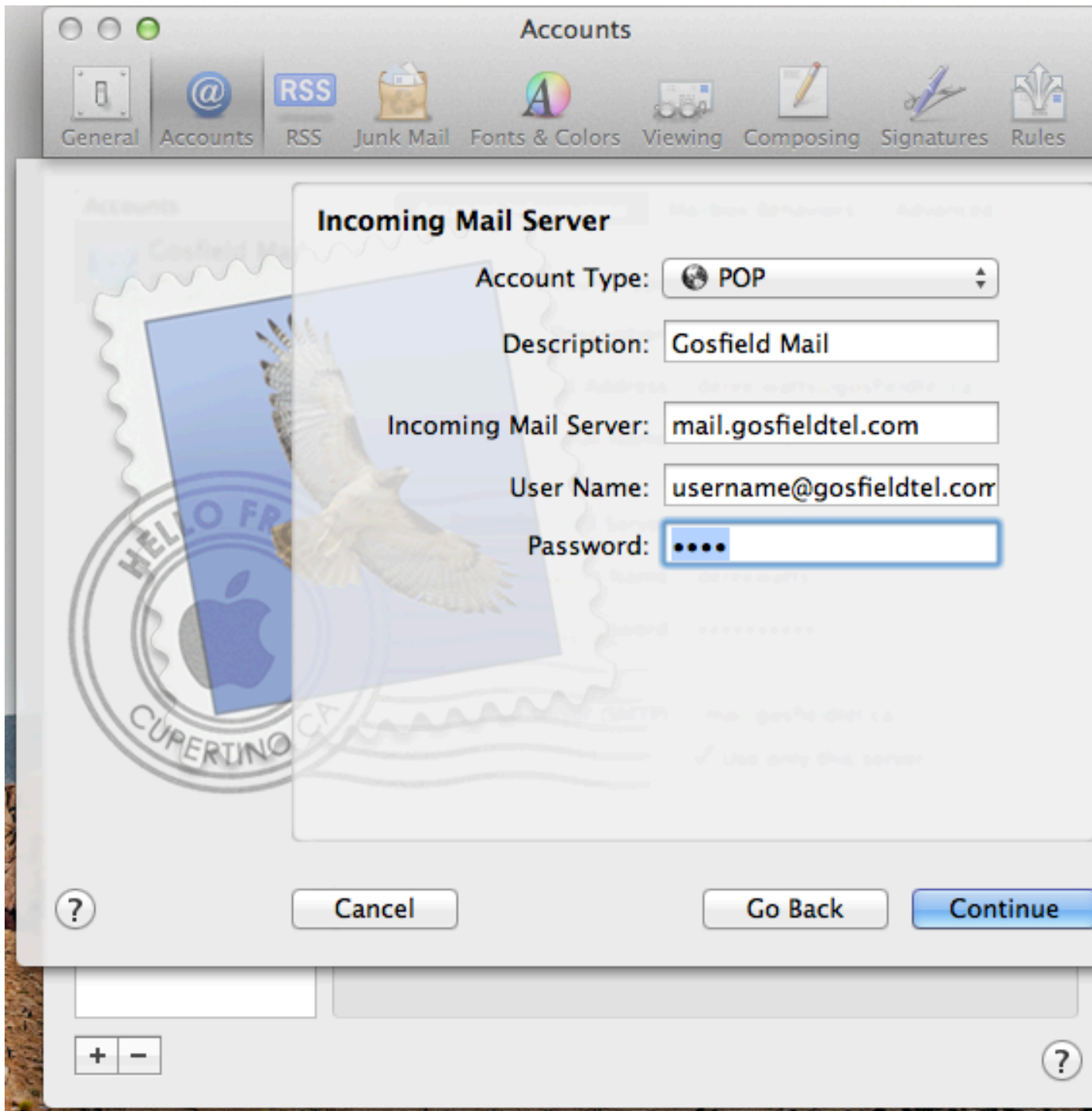


Cancel

Go Back

Continue





Accounts

- General
- Accounts
- RSS
- Junk Mail
- Fonts & Colors
- Viewing
- Composing
- Signatures
- Rules

Incoming Mail Server

Account Type: POP

Description: Gosfield Mail

Incoming Mail Server: mail.gosfieldtel.com

User Name: username@gosfieldtel.com

Password: [masked]

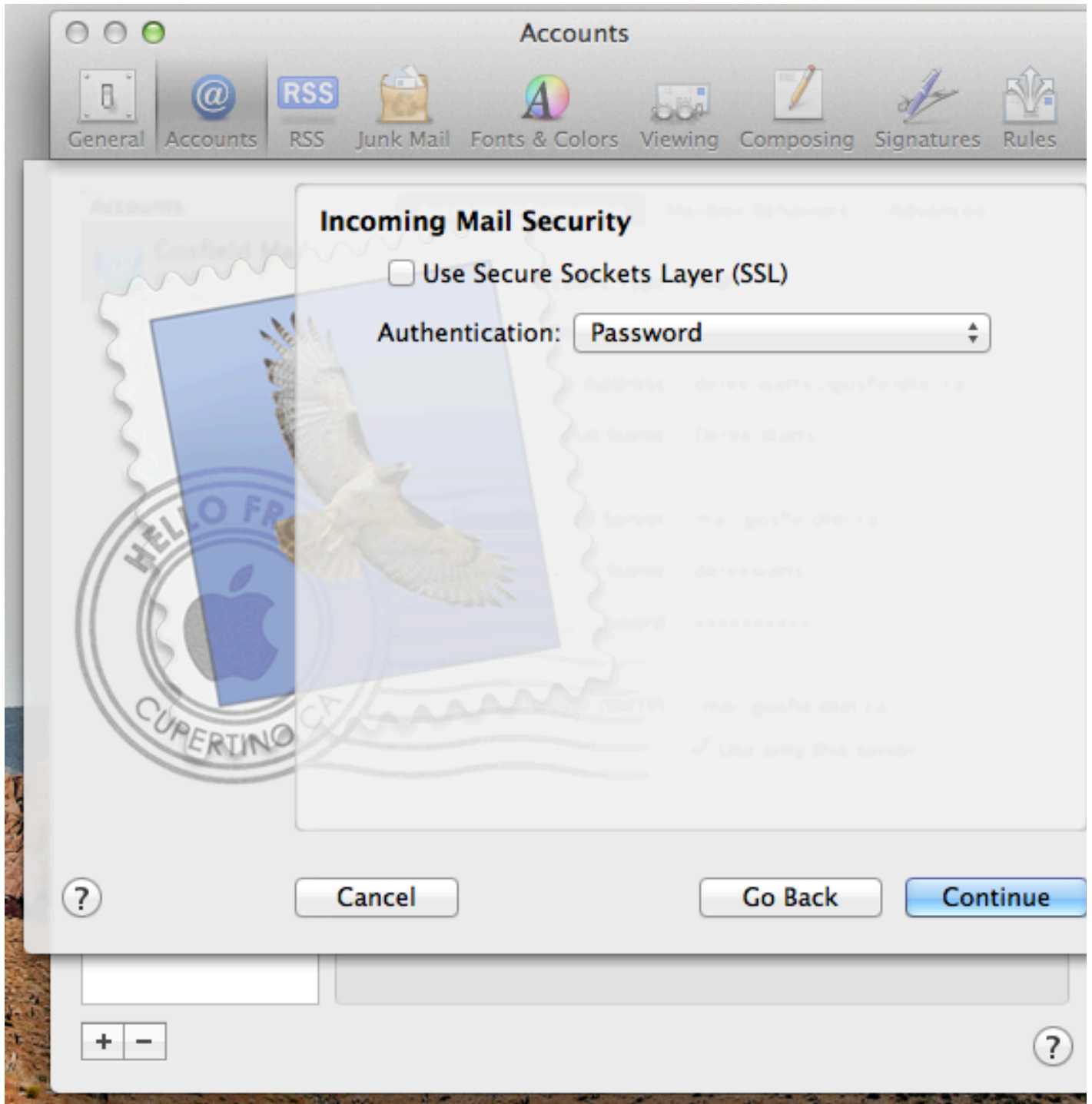


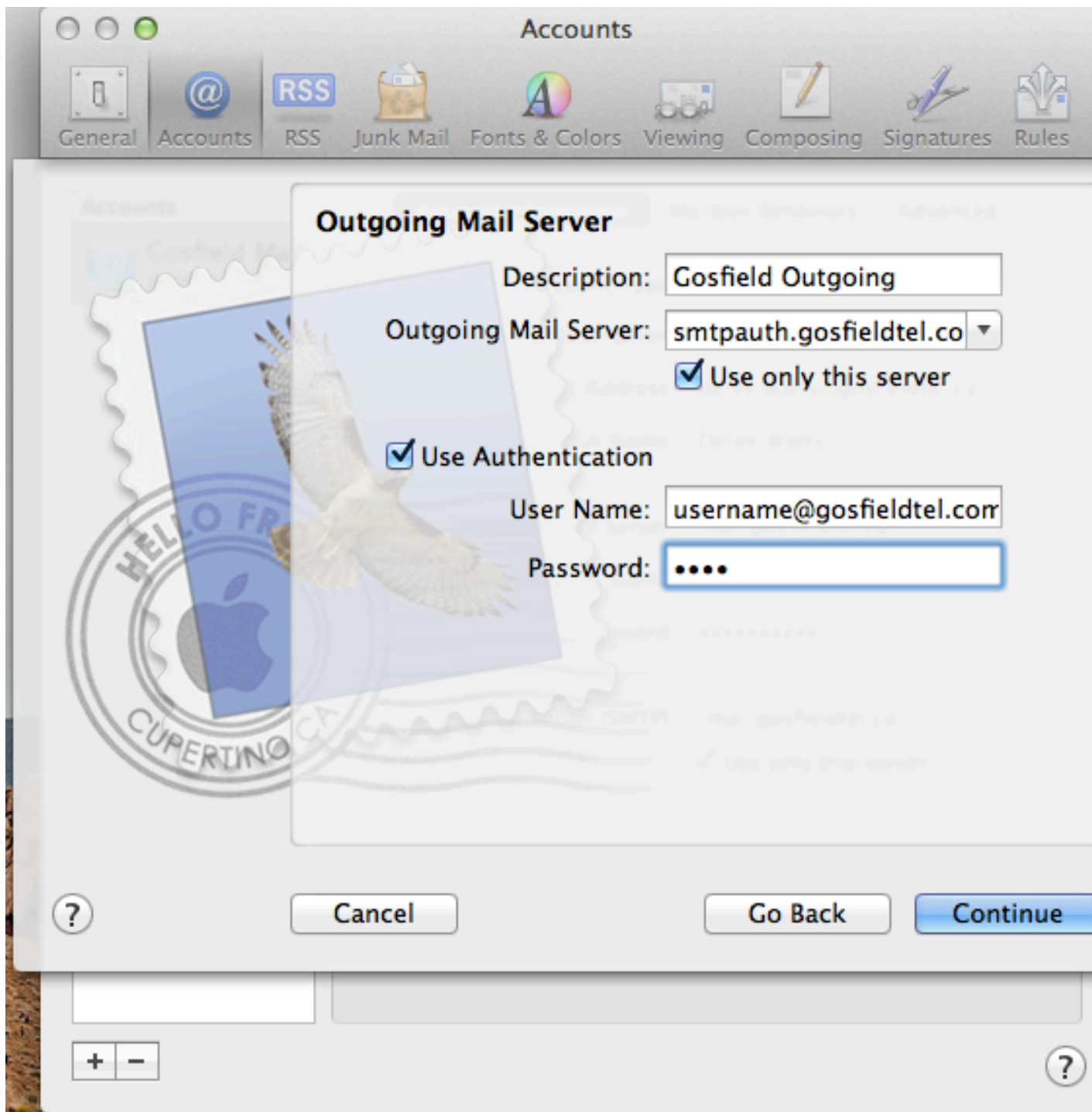
Cancel

Go Back

Continue









Click continue and you are complete.